

# Cathedral Canyon

Homeowners Association #1

## TIER 3) MODERATE OR ORANGE

**WHAT IT MEANS:** Some indoor business operations are open with modifications

### CRITERIA:

**# of new daily cases: 1-3.9 per 100K people**

**Positivity rate: Between 2% and 4.9%**

## Riverside County Enters Into Orange Tier

### California COVID-19 Tiers

As of April 7, Riverside County entered the less restrictive orange tier of the state's coronavirus reopening framework. Being in the Orange Tier allows a removal of limits on how many customers can be inside retail stores and allow restaurants to open at 50% capacity, according to county spokeswoman Brooke Federico. In addition, outdoor pool operations may remain open and outdoor hot tubs may remain open only for use by one household group at a time or in cases where 6 feet of distancing can be maintained.

### FRIENDLY REMINDER

Please make sure you & your guests understand that walking, biking or playing on the golf course & paths can be quite hazardous. There have been several incidents of children playing in the sand traps and lakes.

## Neighborhood News

Our neighbor, the Welk Resort was one of all Welk properties acquired by Marriott Vacations Worldwide. Welk Resorts started by famed television bandleader Lawrence Welk grew as a family-owned business to include eight Welk-branded vacation resorts that will now be rebranded as Hyatt Residence Club properties.

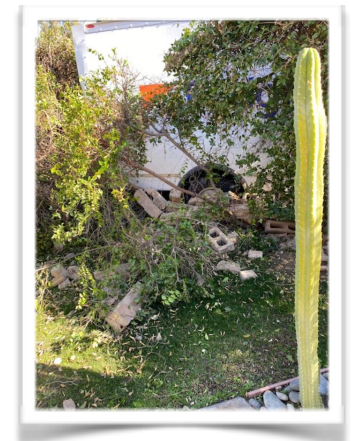
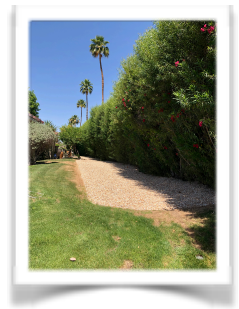
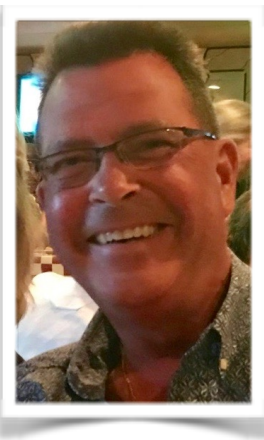
## Board News

### Projects, updates and repairs

- **Pool Filter Theft** at Pool #5 was reported and the board is looking into options to discourage future thefts. Please be extra vigilant about locking condos, car doors and watch for any suspicious behavior.
- **Earthquake Insurance** options have continued to be pursued and reviewed by your board. Currently, the opt in company is Motus Insurance Co. Their website is [www.motusins.com](http://www.motusins.com) . We encourage homeowners to contact them to to see if it is a right fit.
- **Welcome Board member,** Brian Holmes! Born a desert rat in Santa Fe, NM, Brian grew up in Denver suburbs. After his time in the Navy, he worked for a government defense contractor in Orlando. Realizing Florida wasn't for him, he moved to Ohio, where he met his partner, Bob. Working for Walmart management, the cold weather got to them and after vacationing here, loving the climate and slower pace, they bought their condo in 2016. As a member of the United Methodist Church, Brian wants to have a positive impact on our community. He looks forward to help to make living here as enjoyable as possible for all our neighbors.
- **Cathedral Canyon wall** was damaged by a truck in January. The board worked with the drivers insurance company to repair the damages as swiftly as possible.
- **Landscape Update** was started adding rocks that blend with existing desert landscape on a large, bare spot behind Calle Mora. The board is working with Welk to cover Paseo Real median maintenance. Fruit trees will be trimmed in May, so feel free to take some fruit.
- **Errant Golf Balls** JC Golf added out of bound stakes to discourage golfers from playing off of HOA and homeowners property.

## HELPFUL PHONE NUMBERS

Burrtec Trash	760-340-2113
Cathedral City Police	760-770-0362
Coachella Valley Water	760-391-9600
Desert Management	760-862-1202
Dewey Pest Control	760-327-8481
So Cal Edison	800-655-4555
So Cal Gas Co.	800-427-2200
Spectrum Cable	833-697-7327



## HOA #1 BOARD OF DIRECTORS

Bob Thomas, President  
 Sher Landrum, Treasurer  
 Richard Holmes, Vice President  
 Michelle Giacomuzzi, Secretary  
 Ricky Leeper, Director